

SIGN SPACING = X (1)		
RURAL ROADS & URBAN ARTERIALS	45-55 MPH	500' +/-
RURAL ROADS & URBAN ARTERIALS	35-40 MPH	350' +/-
RURAL ROADS & URBAN ARTERIALS	25-30 MPH	200' +/- (2)
RESIDENTIAL & BUSINESS DISTRICTS		
URBAN STREETS	25 MPH OR LESS	100' +/- (2)
(1) ALL SPACING MAY BE ADJUSTED TO ACCOMMODATE INTERCHANGE RAMP AT-GRADE INTERSECTIONS AND DRIVEWAYS.		
(2) THIS SPACING MAY BE REDUCED IN URBAN AREAS TO FIT ROADWAY CONDITIONS.		
ALL SIGNS ARE 36" X 36" BLACK ON ORANGE UNLESS OTHERWISE DESIGNATED		

MAXIMUM CHANNELIZATION DEVICE SPACING (feet)		
MPH	TAPER	TANGENT
50-75	40	80
35-45	30	60
20-30	20	40

PCMS	
1	2
LEFT LANE CLOSED	NO LEFT TURNING
2.0 SEC	2.0 SEC

FIELD LOCATE XX MILES +/- IN ADVANCE OF LANE CLOSURE TAPER

LONGITUDINAL BUFFER SPACE = B							
SPEED (MPH)	20	25	30	35	40	45	50
LENGTH (feet)	115	155	200	250	305	360	425

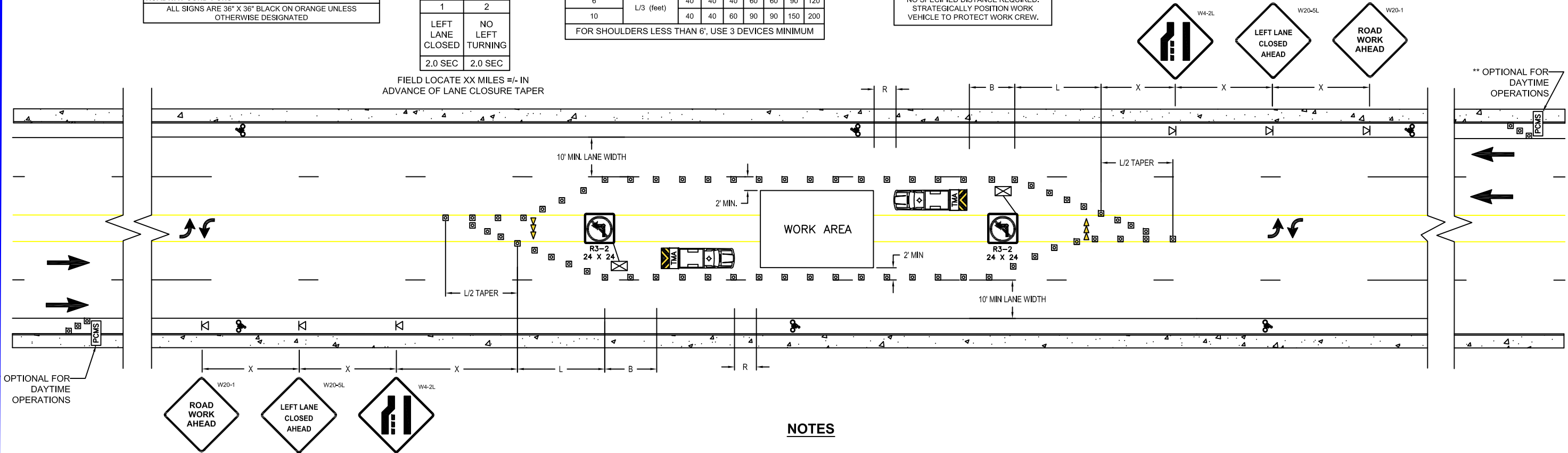
MINIMUM LANE CLOSURE TAPER LENGTH = L							
LANE WIDTH (feet)	SPEED (MPH)	20	25	30	35	40	45
		20	25	30	35	40	45
12	L (feet)	80	140	180	270	330	540

SHOULDER CLOSURE TAPER LENGTH = L/3							
SHOULDER WIDTH (feet)	SPEED (MPH)	20	25	30	35	40	45
		20	25	30	35	40	45
6	L/3 (feet)	40	40	40	60	60	90
10		40	40	60	90	90	150

FOR SHOULDERS LESS THAN 6', USE 3 DEVICES MINIMUM

STATIONARY TRANSPORTABLE ATTENUATOR ROLL AHEAD DISTANCE = R			
HOST VEHICLE WEIGHT 9,900 TO 22,000 lbs		HOST VEHICLE WEIGHT 22,001+ lbs	
UP TO 40 MPH	45-55 MPH	UP TO 40 MPH	45-55 MPH
100'	123'	74'-0"	100'-0"

PROTECTIVE VEHICLE ROLL AHEAD DISTANCE = R	
NO SPECIFIED DISTANCE REQUIRED. STRATEGICALLY POSITION WORK VEHICLE TO PROTECT WORK CREW.	



NOTES

1. Nighttime work requires additional roadway lighting, PCMS reader boards, nighttime channelizing devices. This TCP shall not be used for nighttime work.
2. A TMA is required for roadways 45 mph or higher. For roadways 40 mph or less, if a TMA is not available a Protective Vehicle shall be strategically located to shield the work area. Work vehicle shall have one following; high intensity rotating, flashing, oscillating or strobe lights.
3. Traffic safety drums, tall channelization devices, or 36-inch cones are required for all lane closure tapers on roadways 45 mph or higher. (Half spacing required for tall channelization devices and 36-inch cones)
4. Devices should not encroach into adjacent lanes.



TYPICAL LEFT LANE AND CENTER  
TURN LANE CLOSURE  
FOR MULTI-LANE ROADWAYS

PUBLIC WORKS ENGINEERING	
APPR BY: JTW	DATE: 2/18/2025
DRAWN BY: HEZ	DWG: COR-TCP6
CAD FILE: TCP.dwg (LANE CLOSURE-LCL)	